



ACCUSMART 9500 | End User Guide

Getting Started

Maintenance and Care



Record of changes

Edition	Editor	Check	Date	Description
1.0				Initial Release
1.1	Carl Clemenson		4/15/21	Updated Features

Fluid Management ACCUSMART 9500

Once you've installed your ACCUSMART 9500 Dispenser, what's next? In this guide you'll find more information to help you get the most from your new Fluid Management ACCUSMART 9500.



ACCUSMART 9500

Contents

About this Manual

- 5 How to Use this Guide
- 5 Product Description

Important Safety Information

- 6 For Your Safety
- 7 Information and Instruction Labels
- 7 Safety Notice Information
- 7 General Safety Information
- 8 Grounding
- 9 Communication Regulation Information
- 9 Intended Use & General Liability
- 9 Machine-specific Liability
- 10 User qualification & Disposal

Getting to Know Your ACCUSMART 9500

- 11 ACCUSMART 9500 Features
- 12 Figure Illustration: Front View
- 13 Figure Illustration: Back View
- 14 Figure Illustration: Canister Accessibility
- 15 Technical Specifications
- 15 General Specifications
- 16 Caring for Your Computer

Getting Started

- 18 Installation
- 20 Connecting the label printer (optional)
- 21 Connecting the barcode scanner (optional)
- 23 Preparing the system
- 25 Using the Shelves
- 27 Basic Operations

Maintenance, Care, and Use

- 27 General Cleaning: Weekly
- 28 Daily Maintenance
- 28 Nozzle Cleaning

Service

- 29 FM Direct
- 29 Upgrades and Replacement Parts
- 29 Obtain Warranty Service

About This Manual

How to use this manual

This *Guide* is organized into nine sections. Each section provides detailed information on AccuSmart topics and provides a basic reference that can be used to help you with specific issues.

This *Guide* provides the information for installing your AccuSmart dispenser for the first time and using portions of ColorPro. This publication also includes basic troubleshooting suggestions, customer service information, daily and preventative maintenance procedures, and warranty information.

Your AccuSmart dispenser includes details how to clean the nozzles located inside the top canister cover of the machine. Make sure to follow these directions for the best performance of your machine when instructed.

If you have internet access, the most current information for your AccuSmart is available from the worldwide web at <http://www.fluidman.com>.

Product Description

The AS9500 is focused on improving the intelligence of tinting equipment positively increasing the operator experience. It is a high end/high volume product intended for use at Big Box and independent paint stores. These customers utilize the equipment in very different ways and with varying degrees of frequency.

The AS9500 series is a highly reliable machine that is capable of dispense accuracy and repeatability while delivering best in class performance and durability with the lowest total cost of ownership in its class. The focus of AccuSmart is optimizing the user experience with new features listed but not limited to the following:

- New Dew Point Intelligence (DPI™) system
- New dispense location alignment lights
- New electronics platform
- New dispensing algorithms
- New agitation motors
- Universal 110/230V power supply

Important Safety Information

For Your Safety

Customer safety is always our first priority. Our products are designed to be safe and effective. However, dispensers are electro-mechanical equipment. The AccuSmart line is safe, fast, and reliable - designed to bring many years of operation. Precautions should be taken to avoid damage to the equipment or bodily injury before operating. By carefully following the instructions in this document and the warning and maintenance labels on the machine, you can help protect yourself from hazards and create a safe work environment.

Equipment can become damaged due to misuse or neglect. Some product damage is serious enough that the product should not be used again until it has been inspected and, if necessary, repaired by a Fluid Management Authorized Service Technician. As with any device, pay close attention to the dispenser when it is turned on. Noticeable changes in daily operation may mean that an internal component requires attention. **DO NOT** take risks or attempt to diagnose situations yourself. Contact Fluid Management at 1.800.462.2466 for assistance.

Safety Precautions

- Read this guide and all warning labels before using the machine.
- Keep this guide in a safe place.
- Read and adhere to all Warning and Caution labels on the machine.
- Prepare, level, and clear the area where the machine will be installed.
- To avoid risk of fire or injury, unplug the power before servicing electrical components.
- **DO NOT dispense flammable materials.**
- After installing, complete a purge and check the plumbing.
- Check that canisters and lines are secure and in place.
- Plug into an approved grounded outlet only. Make sure the outlet meets all national and local codes.
- DO NOT install equipment near water exposure.
- DO NOT push any objects into the air vents or openings of your equipment. Doing so can cause an electric shock by shorting out interior components.
- Ensure that nothing rests on your equipment's cables and that the cables are not located where they can be stepped on or tripped over.

Important Safety Information

Information and Instruction Labels



Warning
Unplug before
servicing

You should become familiar with the information labels affixed to the machine, as well as the warnings, cautions, and notes which appear throughout this guide. Read all the warning labels on the exterior and interior of the dispenser. If the labels become damaged or unreadable, you may purchase replacements from Fluid Management Customer Service.

Safety Notice Information



Warning

WARNING
HAZARDOUS
ELECTRICAL
COMPONENTS

The two main notices used in this *Guide* and on the ACCUSMART 9500 are **Warning** and **Caution**. A **Warning** notice tells you about a hazard that could cause serious injury to you or extensive damage to the equipment. This information is featured in the beginning of the guide to emphasize safety.



Warning
DO NOT use with or
near flammables

When you see a **Warning** notice in this guide, read it carefully before continuing with the operation of the machine. Take all necessary precautions to avoid potential injury.

CAUTION
POTENTIAL
SAFETY
HAZARD

A **Caution** notice tells you about a danger that could cause injury to you or minor damage to the dispenser. When you see a **Caution** notice in this guide, read it carefully and be sure you understand it before continuing.

General Safety Information

DO NOT attempt to service a product yourself unless instructed to do so by Fluid Management Technical Support. Use only a Fluid Management Authorized Service Technician to repair your equipment.

Grounding

This product must be grounded. In the event of an electrical short circuit, grounding reduces the risk of electrical shock by providing an escape for the electric current. This product is equipped with a cord that has a grounding wire and an appropriate grounding plug. The plug must be inserted into an outlet that is properly installed and grounded in accordance with all local codes and ordinances.

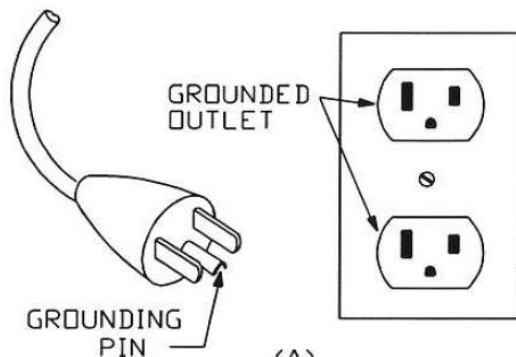
Danger

Improper installation of the grounding plug can result in a risk of electric shock. If repair or replacement of the cord or plug is necessary, **DO NOT** connect the grounding wire to either flat blade terminal.

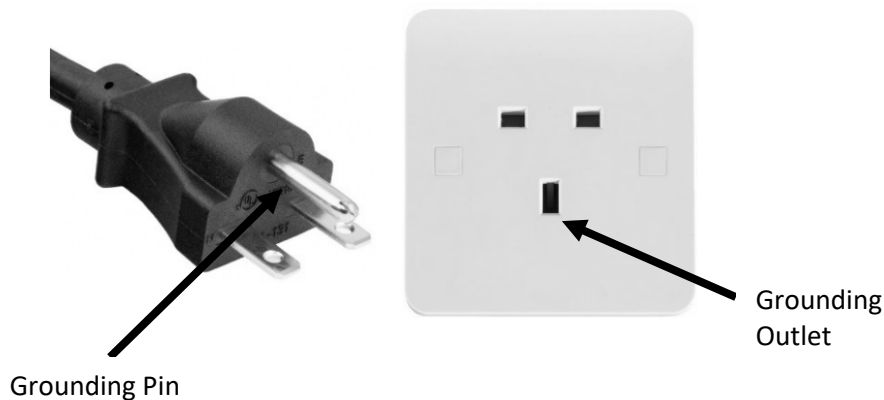
Check with a qualified electrician if the grounding instructions are not completely understood, or if in doubt about whether the product is properly grounded. **DO NOT modify the plug provided.** If it will not fit into the outlet, have the proper outlet installed by a qualified electrician.

NOTE: This product is for use on a nominal 120V to 230V circuit and has a grounding plug like the plug in the figure below. Only connect the product to an outlet having the same configuration as the plug. Do not use an adapter with this product.

120VDC



230VAC



- This machine draws up to 3A at 120 \pm 10% VAC.
- This machine draws 1.5A amps at 230 \pm 10% VAC.
- **DO NOT** modify the provided plug.
- Improper use of grounding plug can result in risk of electric shock.
- Hazardous moving parts. Keep fingers and other body parts away.

Cautions

- Check with a qualified electrician or service person if grounding instructions are not completely understood or if in doubt as to whether product is properly grounded.
- **DO NOT** use an adapter or extension cord with this product.
- This unit must be plugged into a dedicated electrical line.
- To reduce risk of electric shock or injury, use indoors only.
- Never force a connector into a port. If the connector and port do not join with reasonable ease, they probably do not match.
- Make sure that the connector matches the port and that you have positioned the connector correctly in relation to the port.

Communications Regulation Information

Safety and regulatory compliance Information



See the affixed labeling on the machine. This product conforms to UL STD 1450 and is certified to CAN/CSA STD C22.2 NO. 68.

FCC Compliance Statement

This device complies with part 15 of the FCC Rules. Operation is subject to the following two conditions: (1) This device may not cause harmful interference, and (2) this device must accept any interference received, including interference that may cause undesired operation.

Intended Use

The machine is designed to dispense colorants into a container of various sizes. Any other use of the machine is strictly forbidden. Fluid Management Inc. will not accept any responsibility in case of modifications to machines and/or accessories. Modification of machine will invalidate UL Listing and void warranty.

General Liability

Please review and follow the following rules listed below to ensure safety

- Do not dispense flammable materials. Use water-based colorant or colorant having a flashpoint of 100°F or higher.
- To Reduce the Risk of Electric Shock or Injury, the machine is for indoor use only.
- This machine may only be used for commercial settings. The machine is not a household appliance.
- Observe all local safety regulations
- Mind the minimal requirement of the building structure of the load capacity of the floor.
- Place the machine in a well-lit and well-ventilated room.
- Install and connect the machine according to the instructions in this manual.
- Connect the machine to a grounded wall socket.
- Only connect the product to an outlet having the same configuration as the plug.
- Only use the power cord that is provided with the machine.
- This product is for use on a nominal 120V to 230V dedicated circuit.
- Do not use extension cords or inadequately rated power cables.
- Do not use an adapter with this product.
- Make sure that the power cable is freely accessible.
- Do not place heavy objects on top of the machine.
- Do not use a damaged machine. When you have doubts, contact Fluid Management Technical Support.
- Keep the machine in good condition. Make sure that defective parts are immediately replaced.
- Replace parts only with OEM /Fluid Management Inc. spare parts.
- To avoid risk of fire or injury, unplug power before servicing or cleaning.
- All maintenance beyond the scope of this manual must be carried out by a qualified service technician that Fluid Management Inc. has trained and certified.

Machine-specific liability

This machine is designed to dispense colorants into a container in non-hazardous conditions.

Please consult the health & safety officer of your paint supplier and/or colorant supplier on how to avoid the emergency of hazardous situations like personal harm or the risk for fire and explosions.

Personal harm should be avoided by strictly following the materials safety data sheets (MSDS) for colorants, (base) paint and brush liquids. The use of flammable colorants or colorants that diffuse potential explosive vapors may present fire and explosion risks.

User qualification for installation

Installation must be carried out by a qualified service technician that Fluid Management Inc. has trained and certified.

Disposal of the machine

Sort the machine, the accessories and the packaging for environmentally friendly recycling.

Do not dispose of the machine into domestic waste. Dispose of the machine according to local regulations.

Dispose of the canisters as chemical waste in accordance with local regulations.



Getting to Know Your ACCUSMART 9500

ACCUSMART 9500 Features

- High speed dispense improves your order fulfillment efficiency
- DVX™ technology reduces frequency of calibration maintenance, parts and costs while providing dispense accuracy, reliability, and repeatability with each dispense
- Precision tinting, order after order
- Removeable conveyor assembly for processing 5-gallon containers with integrated drop-down 1-gallon shelf
- Integrated pull-out quart and sample shelf
- Automatic nozzle closer and sealed canister lids provide improved environment for waterborne colorants
- Automatic agitation settings maintain colorant condition ready for use
- New high visibility LED dispense lights for improved container alignment
- Stainless steel conveyor or shelf surfaces for easy cleaning
- Dew Point Intelligence (DPI™) technology integrated into the nozzle prevents drying of colorant and reduces the need to clean and purge
- Customizable agitation profiles by colorant/canister allows the ability to create an agitation cycle that is best for any individual colorant based on its liquid properties
- Universal power supply

Figure Illustrations: Front View

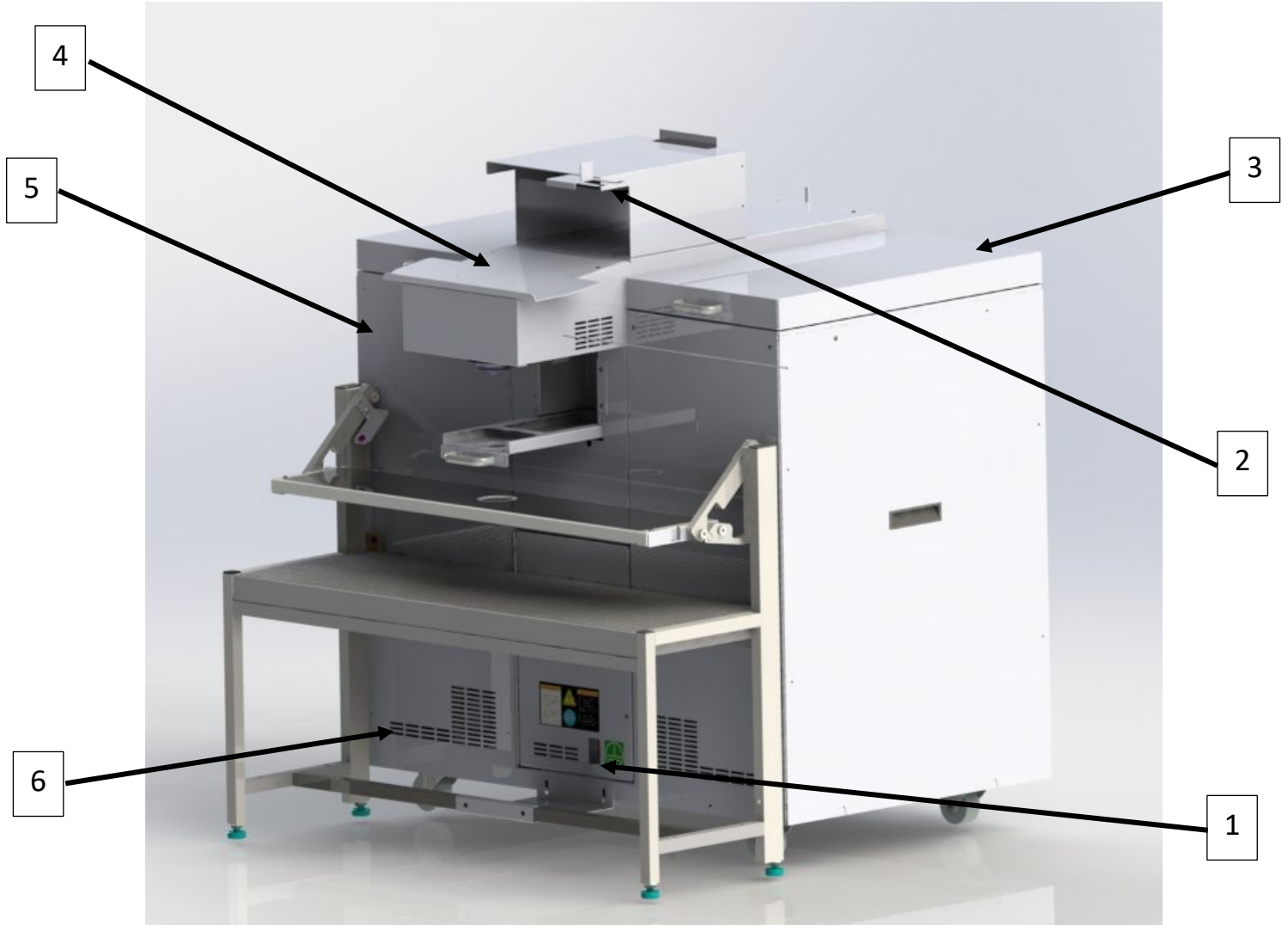


Figure	Description
1	Power Toggle Switch
2	Scan Gun Holder
3	Canister Compartment Lid
4	Keyboard Stand
5	Front Cover
6	Front Air Vents

Figure Illustrations: Back View

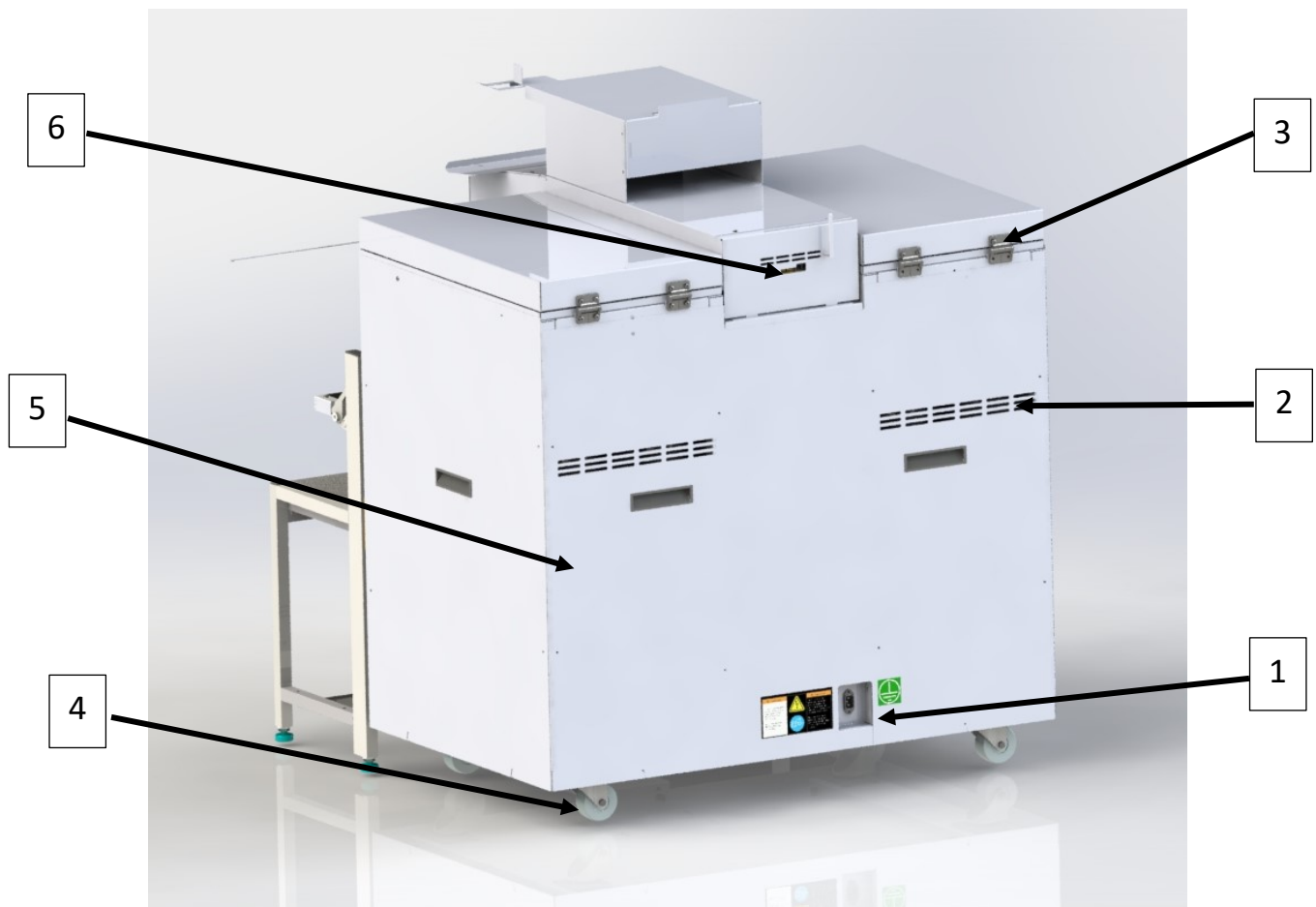


Figure	Description
1	Power Port
2	Rear Ventilation
3	Hinges
4	Casters
5	Back Panel
6	Ethernet and USB ports

Figure Illustrations: Canister Accessibility



Figure	Description
1	Canister Lid
2	Spill Tray
3	Canister

Technical Specifications

General specifications

Parameter	Specification	
	Metric Standard	Imperial Standard
Number of Canisters	16 (max)	
Dispensing	Simultaneous	
Pump Type	DVX™	
Max Pump Speed [L/min - fl oz/min]	0.88 L/min*	30 oz/min*
Minimum Dispense [cc/ml – fl oz]	0.040*	1/768*
Pump Accuracy (fl oz)	±0.0004*	
Canister Sizes [L – US gal] 4qt/6qt/3-gallon/5-gallon	3.8 / 5.7/11.4/18.9	1.0 / 1.5/3.0/5.0
Canister Material	POM	
Canister Fill Levels Accuracy	±5% Canister Volume	
Agitation	DC Stepper Motor with Stall Protection	
Nozzle Closure System	Patented DPI™ Control System	
Colorant Compatibility**	Universal, Low VOC, Water-based	

*Values highly affected by the colorant rheological properties

**Do not dispense colorants with flashpoints <100°F

Dimensions and Mass

Parameter	Specification	
	Metric Standard	Imperial Standard
Dimensions – no accessories HWD [cm - in]	112 x 112 x 109	44 x 44 x 43
Machine weight [kg - lbs.]	200	441
Conveyor weight [kg – lbs]	40	87
Filled machine weight [kg - lbs.] - <i>approximate</i>	500	1100
Required load capacity of the floor [kg - lbs.]	1089	2400

Ambient operating conditions

Parameter	Specification	
	Metric Standard °C	Imperial Standard °F
Temperature [°C - °F], operational	+10 to +40	+50 to +104
Parameter	Specification	
	Metric standard	Imperial standard
Temperature [°C - °F], out of operation	-25 to +55	-13 to +131
Maximum Relative Humidity [RH %]	85%	

Noise level

Parameter	
Maximum noise level [dB(A)]	<70dB

***NOTE:** Environmental conditions will vary the types of colorants used (information provided by paint manufacturer). The data shown is for the machine only.

Safety Specifications

Parameter	Specifications
IP (Ingress Protection) classification	32
EMC (Electromagnetic Compatibility) classification	Class B
Over voltage category	Class II

Electrical specifications

Parameter	Specifications
Maximum dispenser power consumption [W]	(120V)132.165 (220V)91.515
Maximum leakage current [mA]	<0.3
Voltage [V], region depending	110 ± 10% @ 3 amps 220 ± 10% @ 1.5 amps
Frequency [Hz]	50 / 60

Caring for Your Computer

Disconnect the power plug on the computer (by pulling the plug, not the cord) if any of the following conditions exists:

- You want to remove any parts.
- The power cord or plug becomes frayed or otherwise damaged.
- You spill something into the case.
- Your computer is exposed to rain, flooding, or any other excess moisture.

Keep the flat panel monitor in room temperature conditions. Excessive cold or hot conditions can have an adverse effect on the liquid crystal display of the monitor.

NOTE: Review the weight limits referenced in your computer documentation before placing monitor or other devices on top of your computer.

Getting Started: Installation

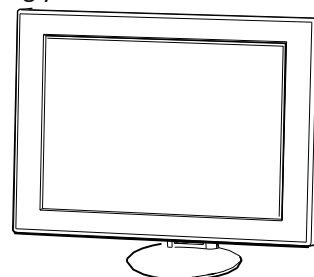
Your ACCUSMART 9500 unit has been designed for quick set up. If you have never used an AccuSmart dispenser or are new to paint dispensers, read this section for instructions on getting started and installing your machine.



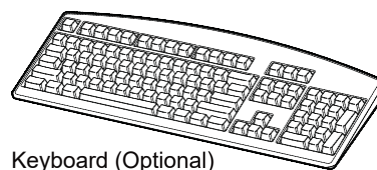
Machine



Computer (Optional)



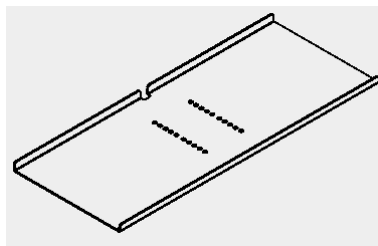
Monitor (Optional)



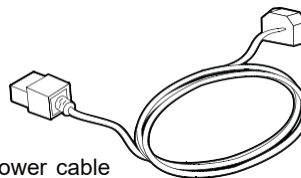
Keyboard (Optional)



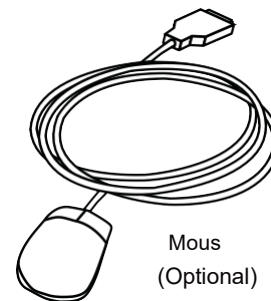
Bar Code Scanner
(Optional)



Keyboard Support Stand



Power cable



Mous
(Optional)

Unpacking and Set up

Follow the steps on the following pages to set up your ACCUSMART 9500.

1 Make sure these items are available before installing.

ACCUSMART 9500 unit
Computer with LAN connector, mouse
and keyboard, Label Printer and
Labels, Barcode scanner

2 Tools needed for installation.

Phillips Screwdriver
Scissors or diagonal cutters

3 Unpack the machine.

- a. Remove the interior contents of the packaging.
- b. While unpacking the machine, inspect the machine for any damage that may have occurred during shipping.

If any damage is found, notify the carrier immediately. Arrange for inspection to claim recovery. Claims for damage must be made by the consignee (YOU). The carrier assumes full responsibility upon acceptance of the shipment and will not entertain any claims by the consignor.

Verify the contents against the packing slip. Note if any items are missing or damaged. Call Fluid Management Customer Service at 1.800.462.2466 if any items are missing.

4 Position dispenser in permanent location.

Choose a location for your dispenser that can support the weight of a fully loaded machine (~ 1100 pounds [500 kg]). Make sure there is enough room for service personnel to have access to the rear of the machine. Routine maintenance may be difficult to perform if access is impeded.

5 Position the monitor, keyboard, and computer.

Place the monitor and keyboard on the appropriate mounts of the machine.



Warnings

ALWAYS shut off the power and unplug your machine from the AC power outlet before servicing.

- This unit must be plugged into a dedicated 15amp 120VAC electrical line.
- The surface the dispenser sits on must be strong enough to support its weight of up to 600lbs (272 kg).
- Dispenser to be installed on a level surface in order to avoid risk of injury
- Replace all fuses with the exact sized replacements.
- This machine is not rated for use in Hazardous Locations and must not be used with flammable materials.
- To reduce the risk of electric shock or injury, use indoors only.

Getting Started: Installation

6 Plug in the power cord and connect all cables.

- Route the keyboard, monitor, and mouse cables to the rear of the machine where the computer has been placed. Plug them into the appropriate ports on the back of the computer.
- If you purchased the optional barcode scanner, label printer or are using a spectrophotometer, route the cables to the rear of the machine where the computer has been placed. Plug these cables into the appropriate ports on the back of the computer.
- Connect the RJ45 LAN cable coming out of the hole of machine where the computer has been placed. Attach the LAN port labeled "**DISPENSER**" on the back of the computer using a USB cable with the LAN cable and dongle.

7. Turn on machine.

- Locate the front panel below the nozzle closer in the center of the machine.
- On the right side of the front panel you will find the red toggle switch.
- The red toggle switch needs to be in the 'RESET' position in order to work properly. If the toggle switch is on the 'OFF' position the AccuSmart will be off.



8. Turn on computer and monitor.

Locate the on/off button on your computer and turn it on.

9. After the machine is installed fill the canisters and open FM Service

Complete an initial manual dispense for each colorant.

Caution



***NOTE:** Do not disconnect power from the machine when not in use (including after hours). The agitation system must continue to operate to maintain good colorant conditioning.

Getting Started: Connecting the Label Printer (Optional)

The label printer software for the label printer is installed on the computer by Fluid Management. All you need to do is connect the printer cables to the computer and to a dedicated power outlet. The original packaging from the printer vendor includes the software, a quick start guide with detailed instructions, and the necessary cables.

Follow these steps to connect the printer:

1



- a. Unpack the printer.
- b. Make sure you have these items:
 - CD - ROM
 - Quick Start Guide
 - Roll of labels
 - USB cable
 - Label printer
 - Power cable
 - Power adapter
- c. Plug the power cord into the power adapter.

2



- a. Plug the power adapter into the power connector on the bottom of the printer.
- b. Plug the other end of the power cord into a power outlet.
- c. Plug the USB cable into the bottom of the printer.

3



Plug the USB cable into the available USB port on the back of the computer.

4

The blue light on the front of the printer should be on if the printer is ready.

- Click the **Print Label (F5)** button to print labels when dispensing a formula.

Getting Started: Connecting the Bar Code Scanner (Optional)

The barcode scanner must be connected to the computer and keyboard. The barcode scanner is pre-programmed by Fluid Management. After the barcode scanner is connected, the scanner must be enabled to be compatible with ColorPro. The original packaging from the vendor includes the barcode scanner, the cable, and a quick start guide.

Follow these steps to install the barcode scanner:

1



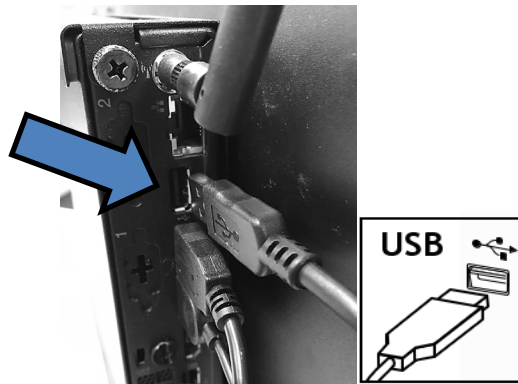
- a. Unpack the barcode scanner.
- b. Make sure the barcode scanner and the cable are included.
- c. Turn on the computer.

2



Plug the interface cable modular cord into the port in the bottom of the scanner's handle.

3

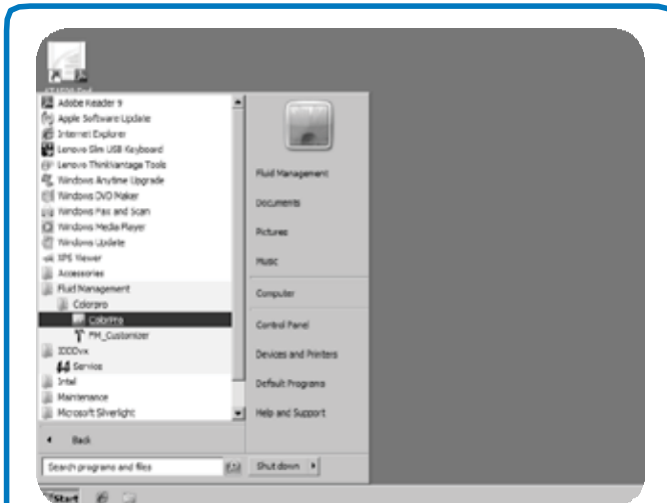


Connect the scanner cable to any USB port available on the back of the computer.

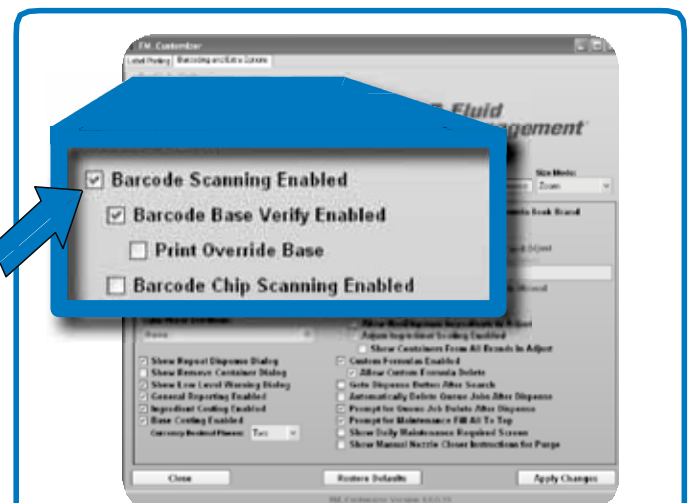
Getting Started: Connecting the Bar Code Scanner

After the barcode scanner is connected to the computer and keyboard, it must be enabled.

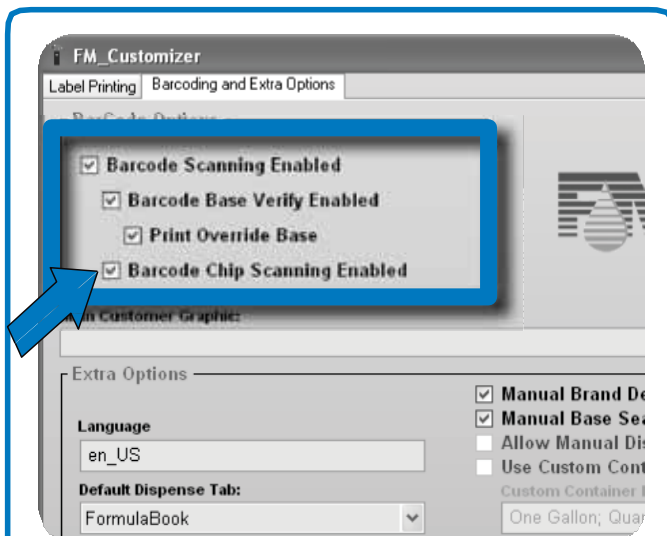
Follow these steps to enable the barcode scanner:



- 4** Locate **FM_Customizer** from Fluid Management folder and launch.
- Type in “service” when you are prompted for the password.
 - Click **Check**.



- 5**
- Check the **Barcode Scanning Enabled** box on the **Barcoding and Extra Options** tab.
 - Click **Apply Changes**, then click **Yes** and **OK**.
 - Close.



- 6**
- Check **Print Override Base** to allow operators to manually override using scanner.
 - Check **Barcode Chip Scanning Enabled** if you are using barcodes to identify formulas from other color chips.



- 7** After enabling the barcode scanner, you can test the scanner by dispensing.
- Open the **Dispense** menu.
 - Select a formula.
 - Click the **Dispense** button. If you receive a prompt that says, “Please Scan the Base Barcode”, you have successfully enabled the bar code scanner.

Getting Started: Preparing the system

After your machine is installed in the proper location you need to fill the canisters with colorant, so you can dispense for the first time. When re-filling canisters, you will follow the same process. Canisters come in varying capacities. Check the label inside the top cover for capacity and colorant locations. **DO NOT** overfill the canisters.



- Proceed to the canister maintenance screen.
- Raise the top covers of the container so you can see the canisters inside.
- Remove the cap from each canister one at a time and fill them with colorant (follow the recommendations of your colorant manufacturer for how to prep colorant prior to pouring).

- Fluid Management recommends hand shaking colorant to ensure uniformity



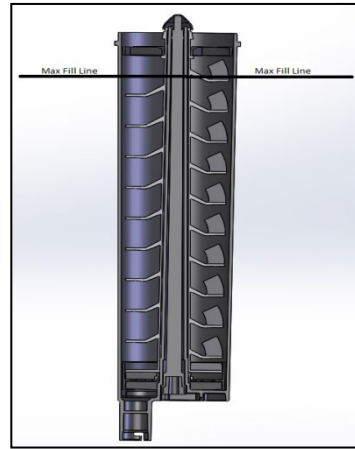
- Follow the instructions on the monitor.
- Add the correct colorant.

- Pour colorant over the center pipe to reduce the introduction of bubbles.

**DO NOT REMOVE THE CENTER PIPE
CAP WHEN POURING COLORANT**



- Do not fill colorant past the highest agitation paddle/blade



- Place the lid back on the canister.
- Close the canister compartment lid.

Caution



- DO NOT operate the dispenser until it is in a permanent location.
- Before dispensing colorant for the first time, you must complete a manual dispense.
- DO NOT dispense without a container in place.
- DO NOT use shelves to reseal paint containers.



Warning

Check the material safety data sheet (MSDS) of the colorants for the personal protection measures that are required for handling the colorant.

This machine is not approved for Hazardous Locations. Do not dispense liquids with flashpoints below 100°F



Caution

Make sure that the colorant level in the canister is correct. Do not dispense a canister dry as this can cause inaccurate dispensing and create system issues. Do not fill the canister to the brim. Leave at least 2.5 cm (1 inch) unfilled.

Getting Started: Using the Shelves

For 5-gallon containers, place them on the platform underneath the nozzle. Use LED lights to align the container bung hole.

5 Gallon



For 1-gallon containers, lower the shelf and place the container underneath the nozzle. Use LED lights to align in center of container.

1 Gallon



For quart and pint containers, pull out the shelf and place the container underneath nozzle. Use caution when inserting the container so as not to strike the nozzle cup. Use LED lights to aid in proper alignment.

1 Quart

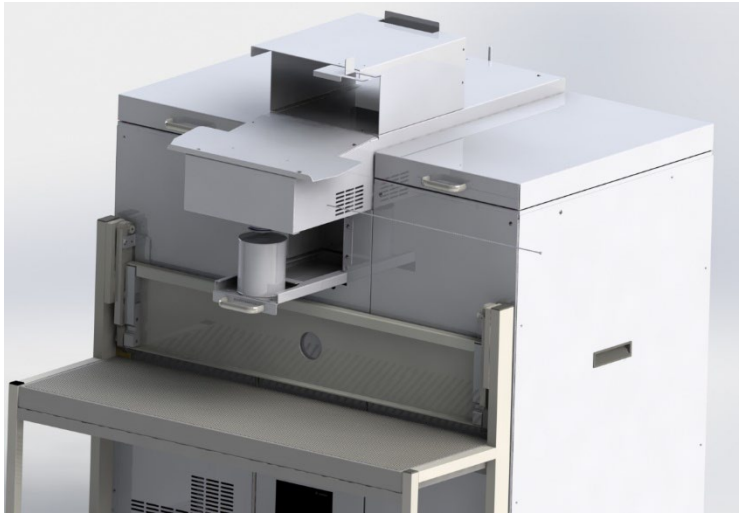
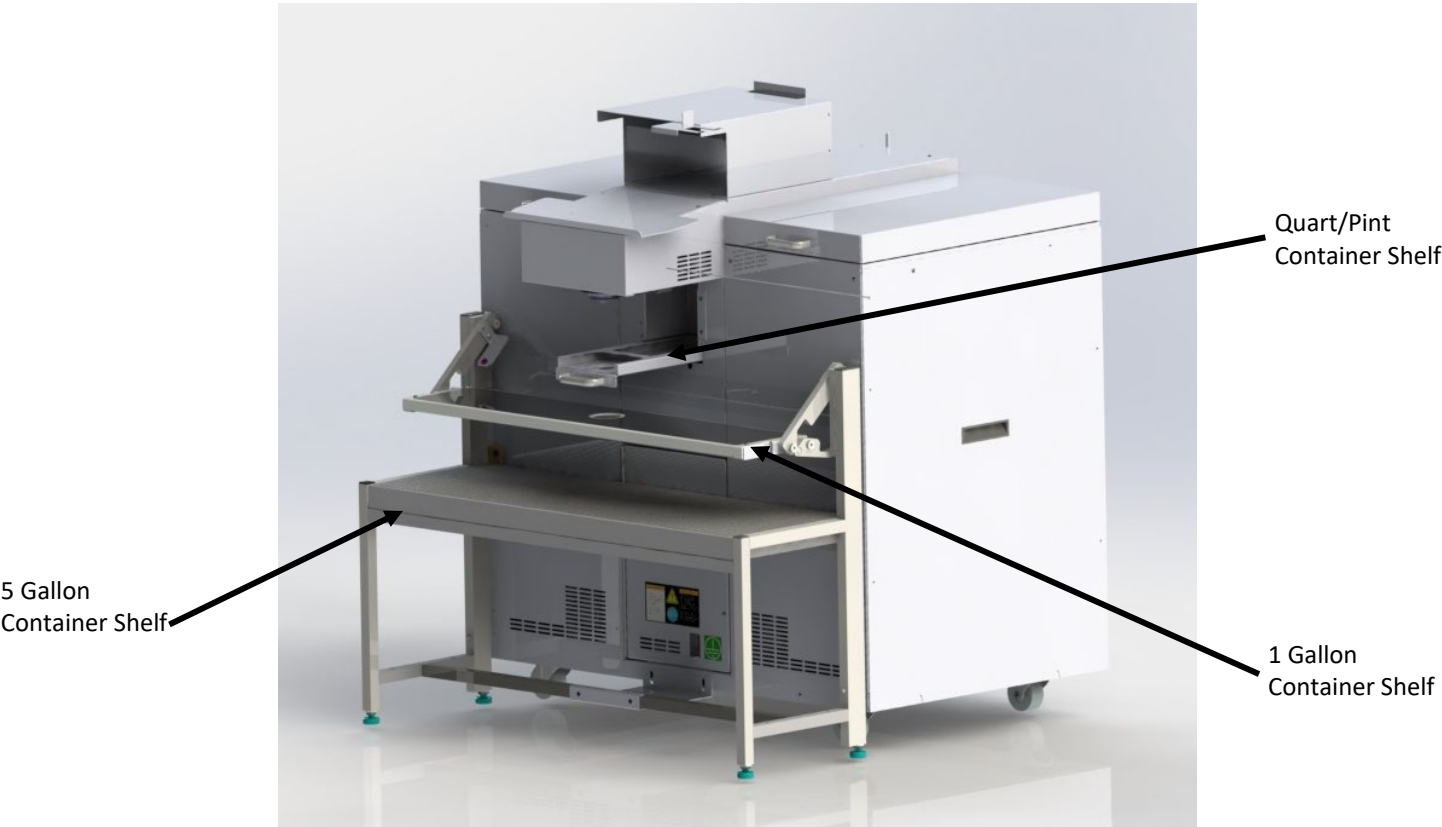


Figure Illustration: Display of Shelves



Note

Before dispensing, make sure container is under nozzle accordingly

Getting Started: Operations

Tips to Improve Operation

- Clean the dispense nozzle as directed by software
- Purge each colorant weekly as directed by software
- Follow the recommended maintenance schedule for your ACCUSMART 9500
- **DO NOT** use solvent based colorants in your ACCUSMART 9500
- **DO NOT** load screen savers onto your ACCUSMART 9500 computer/monitor. Adding this and other software may conflict with FM Service and effect dispense operation
- Use the correct sized labels for your label printer (optional).

General dispensing procedure

For all the dispense software instructions: see the dispense software documentation.

1. Place the can in the correct slots for the correct height.
2. Choose the recipe and dispense. See the dispense software documentation
3. Remove the can.



Note

All operations in this chapter can be executed by the operator.

Getting Started: Maintenance, Care, and Use

General cleaning: Weekly

Clean the machine with a cloth and remove all spilled colorant or other liquid.

DO NOT USE SOLVENT BASED CLEANING AGENTS OR FLUIDS WITH FLASHPOINTS BELOW 100°F

Your AS9500 depends on clean and well-maintained parts. To ensure dispensing accuracy and increase the operation, follow the maintenance schedule detailed below:

PERFORM EVERY WEEK:

- Remove all excess colorant and debris from the nozzle and nozzle cup. Replace sponges as needed (do not double stack sponges) and add a few drops of water to the cup
- Execute a weekly purge as dictated by software
- Clean all accessible surfaces and cabinet with a mild cleaning solution.
- Clean the spill tray and around canisters. **Use caution around each canister so that liquids do not spill into the machine chassis.** Spilled liquids should be removed immediately.
- Use caution around the seals between the canisters and the top spill tray. Replace damaged seals immediately.

PERFORM EVERY SIX MONTHS:

- Perform a machine initialization

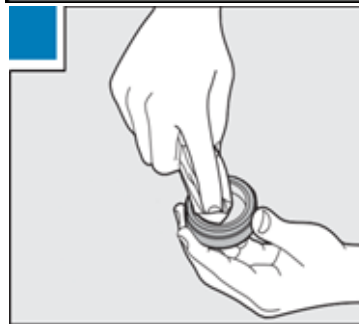


Caution

Do not use solvent based cleaning agents to clean the machine.

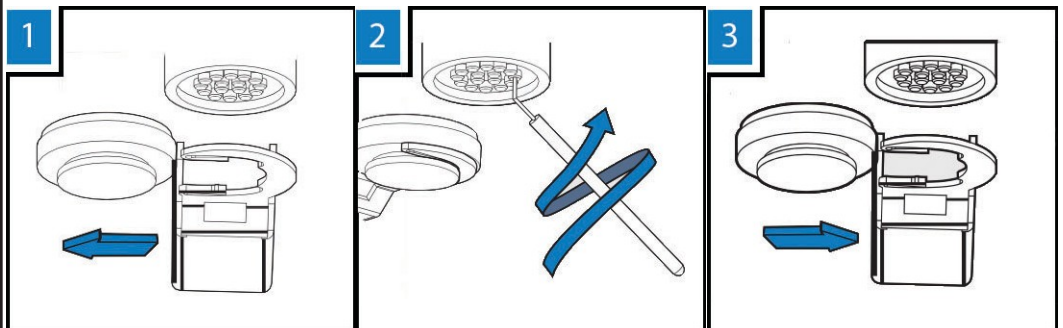
The instructions for daily nozzle cleaning are below. **Do not clean the equipment with a water jet.**

1. Open nozzle
 - a. Choose Open/Close nozzle.
 - b. Make sure nozzle is open.
2. Remove cup from nozzle closer
 - a. Slide black cup holder left to remove from metal bracket.
3. Clean cup
 - a. Clean inside of cup with paper towel.
 - b. Dispose of towel in red Hazmat can.
4. Replace cup
 - a. Insert cup back into metal bracket.
 - b. Make sure cup is securely in place before dispensing.
5. Close nozzle
 - a. Choose Open/Close nozzle.
 - b. Make sure nozzle is closed.



Nozzle
Cleaning (as
needed)

Use caution to
avoid cross
contamination



Service

FM Direct

Fluid Management products are backed by FM Direct, our nationwide team of phone and field service engineers. Providing you with local, hands-on support, over 30 factory-direct service technicians deliver expertise when and where you need it.

- 24/7 multilingual tech support
- Professional installation and on-site operator training
- Fully-stocked parts inventory on FM Direct vans
- Extended warranty and preventive maintenance programs

Upgrades and Replacement Parts

Some parts can be upgraded or replaced by the customer. Fluid Management expressly identifies parts as such, and provides documentation with instructions when it is appropriate for customers to replace those parts. You must closely follow all instructions when performing such replacements. **ALWAYS** make sure that the power is turned off and that the product is unplugged from any power source before you attempt the replacement.

DO NOT attempt to service a product yourself unless instructed to do so by a Customer Service Representative. Use only a service provider who is approved to repair your particular product.

Obtain Warranty Service

First, follow the advice in this guide. If the unit still does not function, call Customer Service for information about how to obtain warranty service.



Fluid Management Customer Service
1.800.462.2466

Save time and money. If something should go wrong, we suggest consulting the **Maintenance**, **Troubleshooting** and **Service** sections of this guide. They are designed to solve basic problems before consulting a service technician.

However, should you need assistance, please have your model and serial number ready. Be near your machine when you call and have a purchase order number if ordering parts.

Fluid Management®

SERIAL NO.

MODEL NO.

PN 4980001

1 800 462 2466 MADE IN USA
1023 Wheeling Road, Wheeling, Illinois 60090-5776

The serial plate is located underneath the lid of the machine. It includes the serial and model numbers for your machine. Please make a note of these numbers below:

Date of purchase:

Model Number:

Serial Number:

**Your Service Technician's
Name:**

ACCUSMART 9500



Fluid Management®

©2020 Fluid Management as published work all rights reserved.

Under the copyright laws, this material may not be copied, in whole or in part, without the written consent of Fluid Management.

Your rights to the software are governed by the accompanying software license agreement.

Use of Fluid Management trademarks, service marks, or logos for commercial purposes without the prior written consent of Fluid Management may constitute trademark infringement and unfair competition in violation of federal and state laws. Fluid Management, FM Direct, ColorPro, DVX, Harbil, Blendorama, Accutinter, Duraflow, Fast & Fluid Management, GyroFlex, GyroMixer, Infina, MicroTint, TintMaster, V1, VR1, AccuSmart, DPI, and Fluid Sense are trademarks of Fluid Management, registered in the U.S. and/or other countries.



ACCUTINTER

Every effort has been made to ensure that the information in this guide is accurate. Fluid Management is not responsible for printing or clerical errors.

Fluid Management

1023 Wheeling Road

Wheeling, Illinois 60090-5776 USA 800-462-2466

<http://www.fluidman.com> Published in the United States.

Mention of third-party products is for informational purposes only and constitutes neither an endorsement nor a recommendation. Fluid Management assumes no responsibility regarding the performance or use of these products.

