

# AT7000/AT7000R CANISTER REPLACEMENT INSTRUCTIONS

---



---

Property of Fluid Management



**Fluid Management®**

# STEP 1



Unplug dispenser power cord from outlet on rear of machine.



## STEP 2

---



- ▶ Unscrew and remove access panels depending on position of pump.

# STEP 3

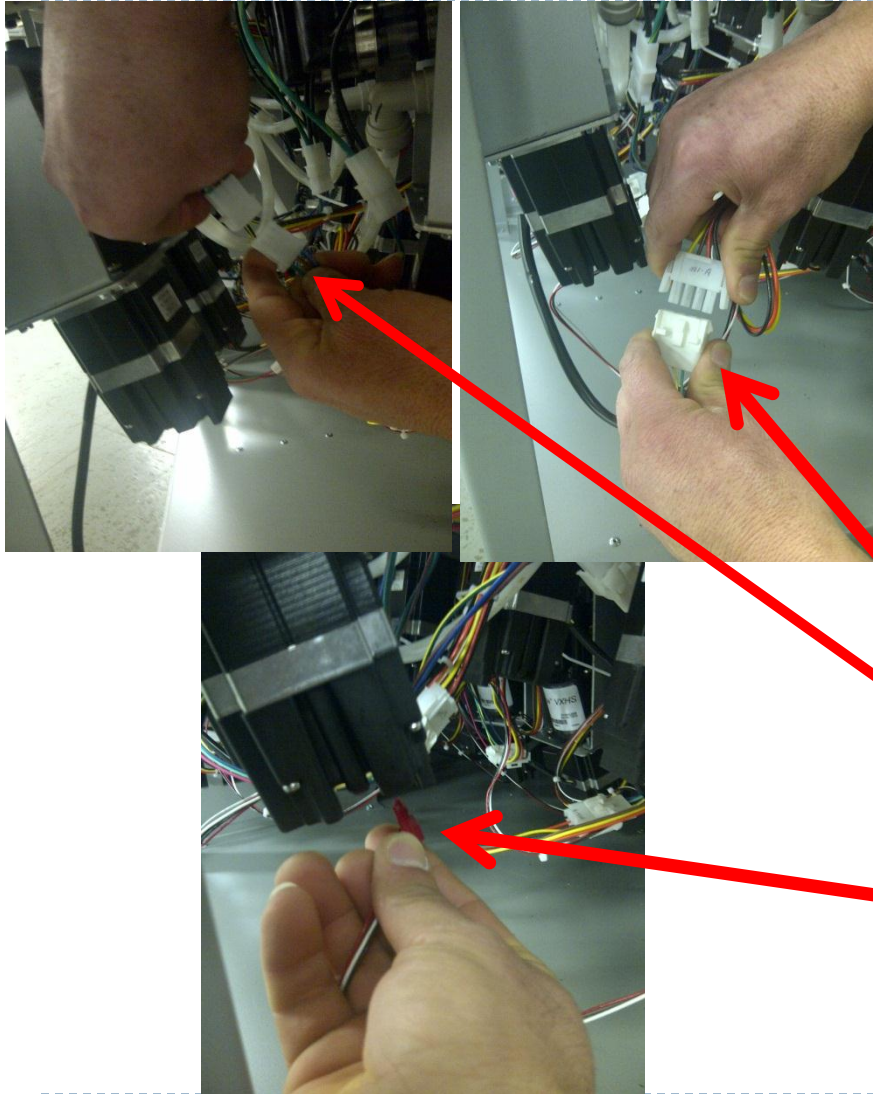
---

- ▶ Locate the canister and pump assembly to be replaced.





# STEP 4



- ▶ Disconnect the 3 wire harness connectors plugged to the DVX pump and Agitation motor.
- ▶ Caution: Do not pull on the wires. Pull on the plastic connector housing.
- ▶ Motor harness connector
- ▶ Agitation motor harness connector
- ▶ Encoder harness connector (located at the bottom of the pump assembly)

# STEP 5



- ▶ Remove the quick disconnect fitting from DVX pump nipple.
- ▶ *To remove the fitting, compress the inner collet towards the fitting. While holding the collet inward pull on the connector removing it from the pump.*

# STEP 6



- ▶ Open top lid and remove defective canister assembly.
- ▶ Push up on the base of the canister to remove canister.



# STEP 7



- ▶ Write down the Home Offset position number located on the new canister and DVX pump assembly and place new canister and DVX pump assembly into open slot.
- ▶ For example on this pump the Home Offset position is “16”
- ▶ When sliding new canister and DVX pump assembly into open slot make sure that harnesses do not get caught up on the drip tray.



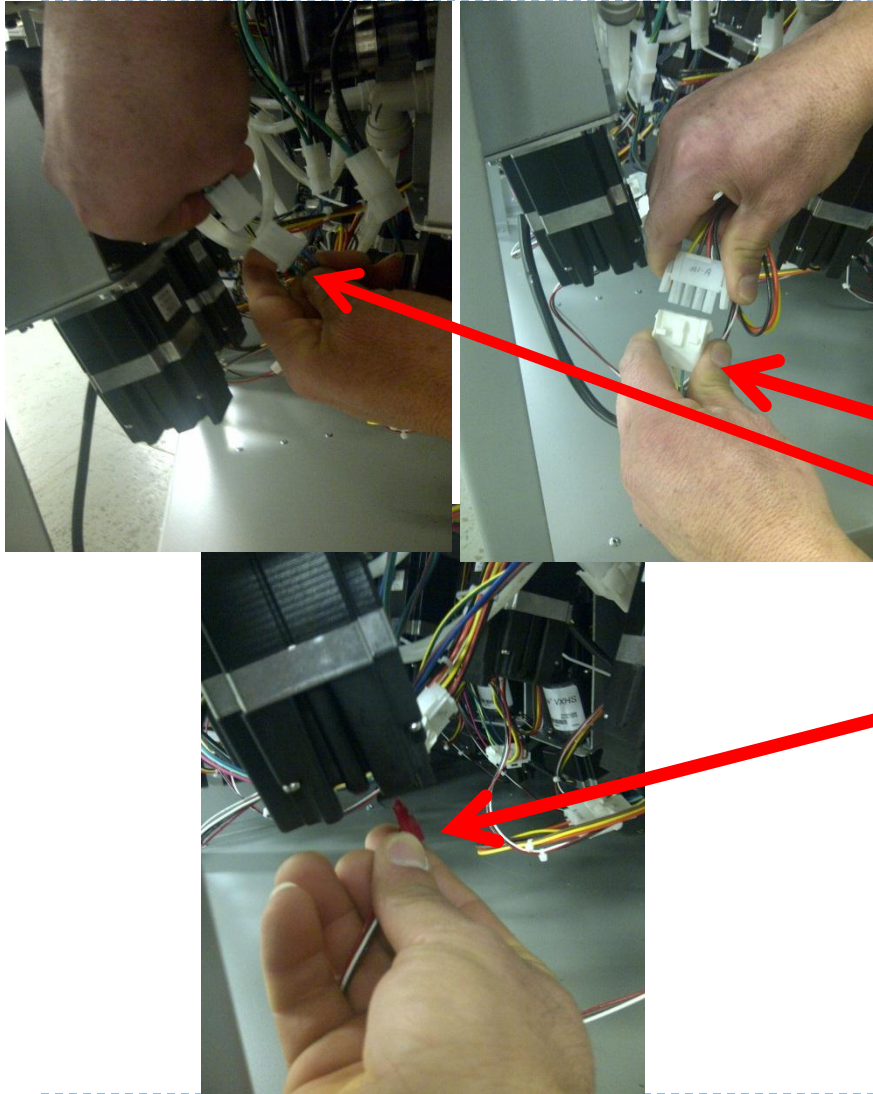
# STEP 8



- ▶ Connect the quick disconnect fitting onto the DVX pump nipple.
- ▶ *Pull on the fitting to insure the seal is tight.*



# STEP 9



- ▶ Connect the 3 wire harness connectors onto the DVX pump and Agitation Motor.
- ▶ Motor harness connector
- ▶ Agitation motor harness connector
- ▶ Encoder harness connector (located on the bottom of the pump assembly)

# STEP 10

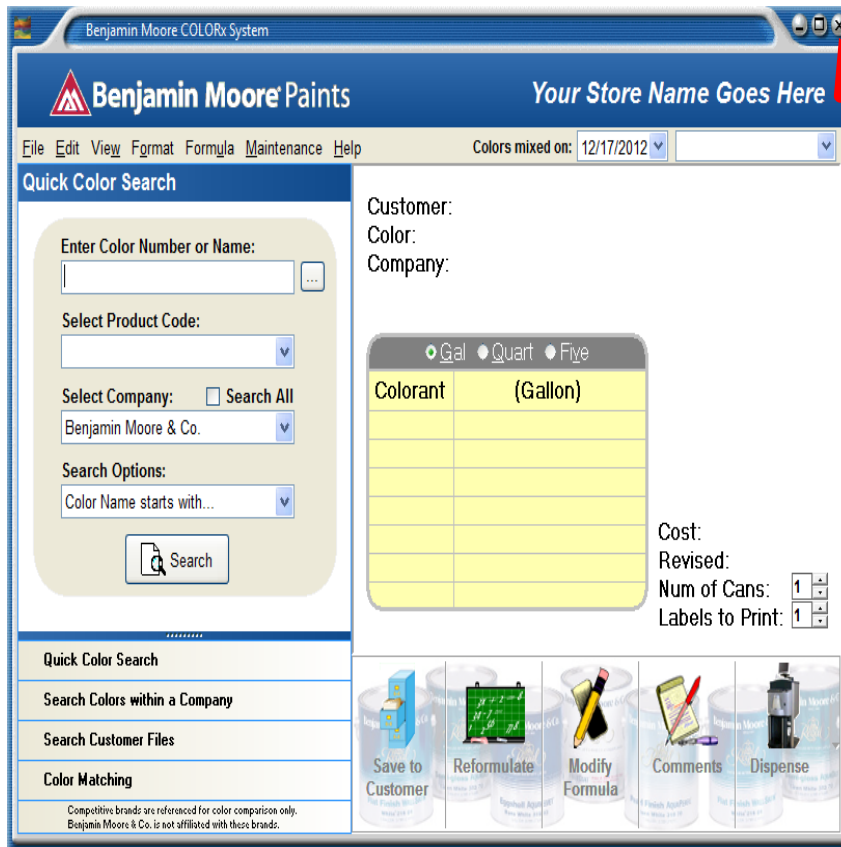


- ▶ Plug dispenser power cord back into outlet.



# STEP 11

- Close the Benjamin Moore Colorx Software





# STEP 12

---



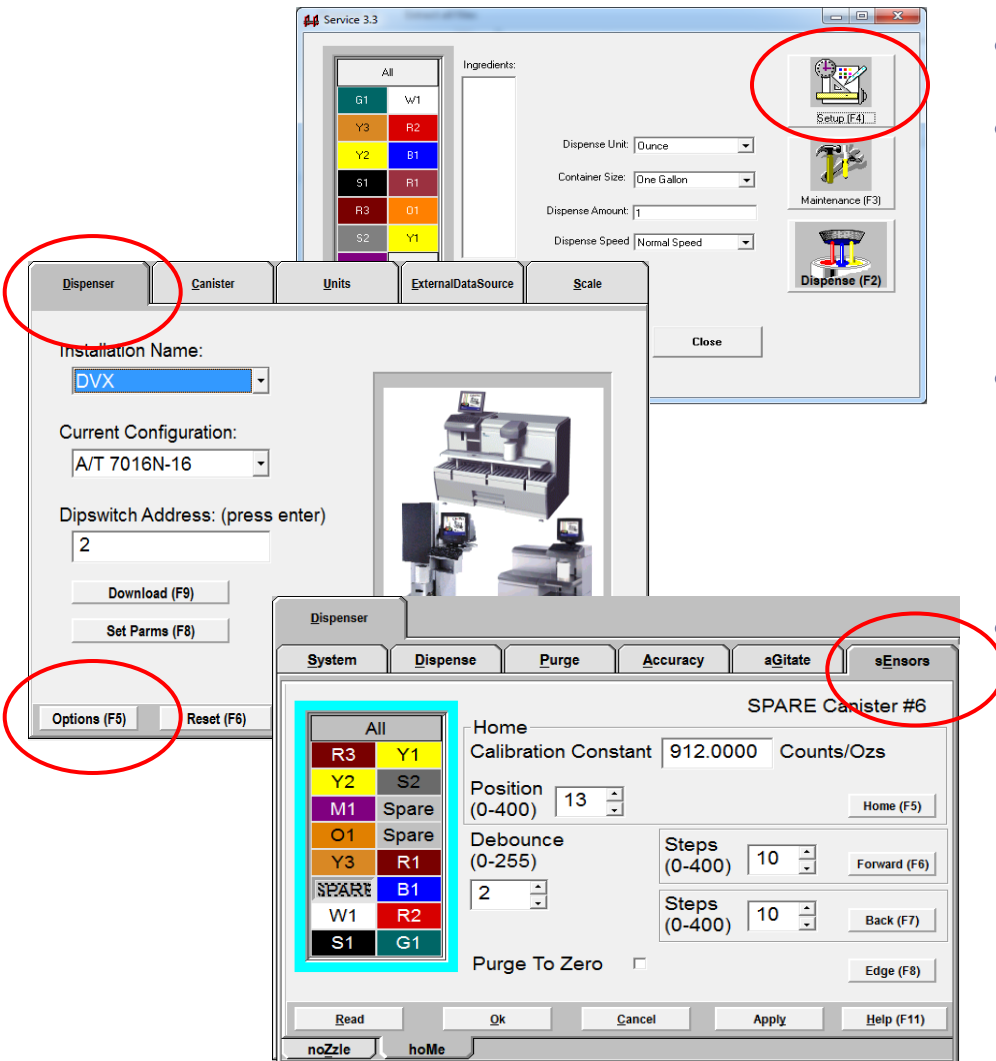
Shortcut to SERVICE.lnk

Please enter your password:

OK Back (Esc)

- ▶ On your desktop click on Shortcut service.exe
- ▶ Password is “service”
- ▶ (if not found on your desktop go to C:\Program Files\Fluid Management\IDDDVX)

# STEP 13



- Click on Setup F4
- Click on the Dispenser tab located on the upper left corner
- Click on Options F5 button located on the bottom left corner
- Click on Sensors tab upper right hand corner

# STEP 14

Dispenser

System Dispense Purge Accuracy aGitate sEnsors

S2 Canister #2

Home

Calibration Constant 890.0000 Counts/Ozs

Position (0-400) 16 Home (F5)

Debounce (0-255) 2

Steps (0-400) 10 Forward (F6)

Steps (0-400) 10 Back (F7)

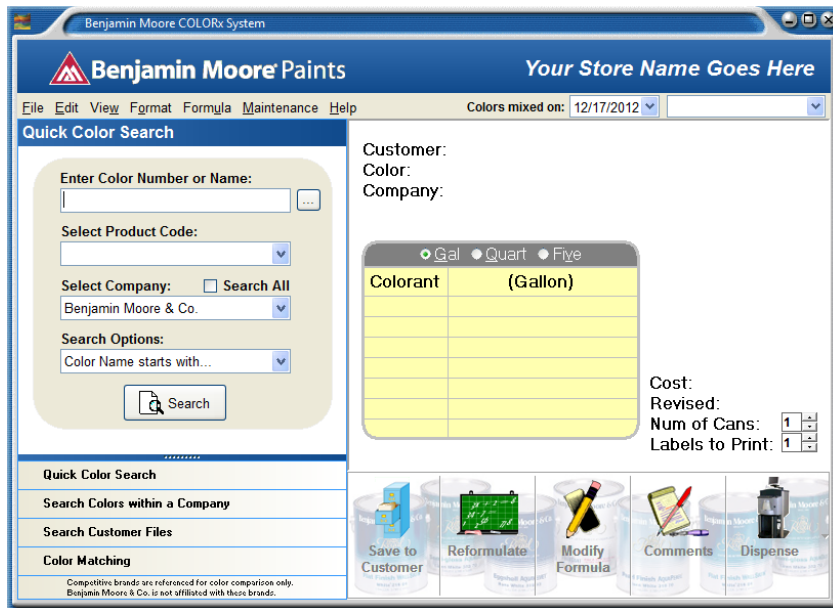
Purge To Zero ☐ Edge (F8)

Read Ok Cancel Apply Help (F11)

nozzle home

- Select the colorant you replaced and in the position slot type in the Home Offset position you had written earlier from the new DVX pump and click apply and ok.
- Close out service.exe once the dispenser is done doing the pulse test.

# STEP 15



- ▶ Fill the new canister with colorant.
- ▶ Open the Benjamin Moore Colorx software
- ▶ Click on Maintenance
- ▶ Click on Levels
- ▶ Select the colorant to be filled and adjust accordingly.



# STEP 16

The screenshot shows the Benjamin Moore COLORx System software interface. The title bar reads "Benjamin Moore COLORx System". The main header features the Benjamin Moore logo and the text "Your Store Name Goes Here". Below the header is a menu bar with "File", "Edit", "View", "Format", "Formula", "Maintenance", and "Help". A status bar at the top right indicates "Colors mixed on: 12/17/2012".

The interface is divided into several sections:

- Quick Color Search:** Contains input fields for "Enter Color Number or Name:", "Select Product Code:", "Select Company:" (with a "Search All" checkbox), and "Search Options:" (with a "Color Name starts with..." dropdown). A "Search" button is at the bottom.
- Customer Information:** Fields for "Customer:", "Color:", and "Company:".
- Colorant Table:** A table with columns "Colorant" and "(Gallon)". It has a header row and several empty rows below it. Above the table are radio buttons for "Gal", "Quart", and "Five".
- Cost and Labels:** Fields for "Cost:", "Revised:", "Num of Cans:", and "Labels to Print:".
- Bottom Navigation:** A row of icons with labels: "Save to Customer", "Reformulate", "Modify Formula", "Comments", and "Dispense".

At the bottom left, there is a small disclaimer: "Competitive brands are referenced for color comparison only. Benjamin Moore & Co. is not affiliated with these brands."

- Perform a manual dispense of 4 oz. on the new canister assembly.
- Verify it is dispensing properly. The large dispense is to remove any air in the tubing.
- Verify agitation
- After verifying step 16 canister replacement is complete.